

2023 / 2024 VOLVO WINTER WHEEL KIT PRICING GUIDE

VEHICLE	XC40		XC40/C40 RECHARGE (PURE ELECTRIC)				XC60 MY18+				XC60 POLESTAR ENGINEERED		XC90 MY16+			
PART NUMBER/SKU	8640938	8640939	32354020	32354021	32354022	32354023	8640954	8640955	8640956	8640957	8640962	8640963	8640958	8640959	8640960	8640961
LEFT/RIGHT	LH	RH	LH (FRONT)	RH (FRONT)	LH (REAR)	RH (REAR)	LH	RH	LH	RH	LH	RH	LH	RH	LH	RH
RIM	* 1. 18" - 5 Double Spoke Black Diamond Cut Alloy Wheel		* 2. 19" - 5 Double Spoke Black Diamond Cut Alloy Wheel				* 3. 18" - 5 Y Spoke Silver Alloy Wheel		* 4. 19" - 10 Spoke Black Diamond Cut Alloy Wheel		* 5. 21" - 5 Y Spoke Black Diamond Cut Forged Alloy Wheel		* 6. 19" - 6 Spoke Silver Alloy Wheel		* 7. 20" - 5 Multi Spoke Matt Graphite Alloy Wheel	
TIRE SIZE	235/55 R18		Front: 235/50 R19 Rear: 255/45 R19				235/60 R18		235/55 R19		255/40 R21		235/55 R19		275/45 R20	
TIRE MODEL	Michelin X-ICE Snow		Pirelli Scorpion Winter				Michelin X-ICE Snow SUV, XL				Pirelli Scorpion Winter, XL		Michelin X-ICE Snow SUV, XL		Michelin X-ICE Snow SUV, XL	
MSRP	Regular: \$4226.00 Seasonal Promo: \$3295.00		Regular: \$5226.00 Seasonal Promo: \$3795.00				Regular: \$4226.00 Seasonal Promo: \$3295.00		Regular: \$5039.00 Seasonal Promo: \$3795.00		Regular: \$8812.00 Seasonal Promo: \$4895.00		Regular: \$5039.00 Seasonal Promo: \$3795.00		Regular: \$6443.00 Seasonal Promo: \$4295.00	

This vehicle requires four separate part numbers per car



Connect with our
tire experts today!

Volvo of Unionville
(905) 948-0840
parts@volvoofunionville.ca
service@volvoofunionville.ca

* = Volvo Original Equipment

Volvo Car Canada Ltd. Corporation reserves the right to make changes at any time, without notice, to pricing, colours, specifications, accessories, materials and models. For additional information please visit www.volvocars.ca or contact your authorized Volvo retailer. © 2023 Volvo Cars of Canada Corp.

2023 / 2024 VOLVO WINTER WHEEL KIT PRICING GUIDE

VEHICLE	S60/V60 MY19+		S60/V60 POLESTAR ENGINEERED		V60 CROSS COUNTRY MY19+		S90 MY17+		V90 CROSS COUNTRY MY18+	
PART NUMBER/SKU	8640948	8640949	8640950	8640951	8640952	8640953	32354024	32354025	8640922	8640923
LEFT/RIGHT	LH	RH	LH	RH	LH	RH	LH	RH	LH	RH
RIM	8. 18" - 5 Y Spoke Black Diamond Cut Alloy Wheel*		9. 19" - 5 Y Spoke Black Diamond Cut Forged Alloy Wheel*		10. 18" - 5 Spoke Silver Alloy Wheel*		11. 19" - 10 Spoke Silver Alloy Wheel*		12. 19" Black Diamond Cut 5 Double Spoke Alloy*	
TIRE SIZE	235/45 R18		235/40 R19		215/55 R18		255/40 R19		235/50 R19	
TIRE MODEL	Michelin X-ICE Snow, XL		Michelin X-ICE Snow, XL		Michelin X-ICE Snow, XL		Michelin X-ICE Snow		Pirelli Scorpion Winter	
MSRP	Regular: \$4334.00 Seasonal Promo: \$3295.00		Regular: \$7217.00 Seasonal Promo: \$4295.00		Regular: \$4206.00 Seasonal Promo: \$3295.00		Regular: \$5363.00 Seasonal Promo: \$3795.00		Regular: \$5226.00 Seasonal Promo: \$3795.00	



Connect with our
tire experts today!

Volvo of Unionville
(905) 948-0840
parts@volvoofunionville.ca
service@volvoofunionville.ca

* = Volvo Original Equipment

Volvo Car Canada Ltd. Corporation reserves the right to make changes at any time, without notice, to pricing, colours, specifications, accessories, materials and models. For additional information please visit www.volvocars.ca or contact your authorized Volvo retailer. © 2023 Volvo Cars of Canada Corp.

MICHELIN® X-ICE® SNOW



COMPACT AND ELECTRIC CARS



SEDANS



COMPACT CUVS AND SUVs



BECAUSE EVERY STOP COUNTS, WINTER AFTER WINTER

A WINTER TIRE DESIGNED FOR MAXIMUM MOBILITY AND SAFETY
– NOT JUST WHEN IT'S NEW, BUT FOR SEASONS TO COME.



MICHELIN



Long-lasting SNOW performance

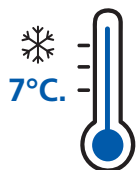
- Excellent snow braking
- Improved snow performance¹

Long-lasting ICE performance

- Leadership in ice braking²
- Brakes up to 2.7 m shorter than a leading competitor³

Improved HYDROPLANING resistance and slush performance⁴

TIRE
ADVANTAGE



- 24-Month road hazard coverage included as part of the Volvo Tire Advantage program
- Approved by Volvo Cars to provide ultimate safety below 7°C even on dry pavement
- Select winter tires that keep drivers safe in all winter driving conditions including cold, wet and icy roads.

V O L V O

MICHELIN



WINTER GRIP MADE TO LAST

BECAUSE EVERY STOP COUNTS, WINTER AFTER WINTER

LONG-LASTING TREAD PATTERN

Tread blocks, grooves and sipes maintain their shape as the tire wears



NEW

5/32" (4 MM)⁶

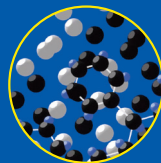
4/32" (3 MM)⁶

NEXT GENERATION V-SHAPED TREAD DESIGN

100% use of the contact patch for optimal grip performance on wet roads, snow and ice and for exceptional slush performance

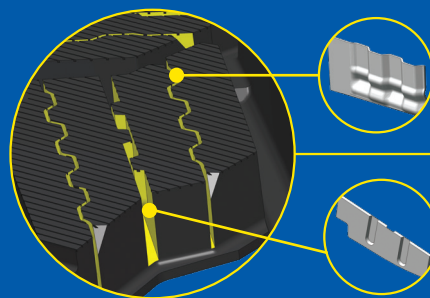
FLEX-ICE™ 2.0 TREAD COMPOUND

- Full silica-based compound to maintain flexibility in severe cold climate conditions



TWO TYPES OF FULL-DEPTH 3D SIPES

For an increased claw effect on snow and ice, and for long-lasting biting edges

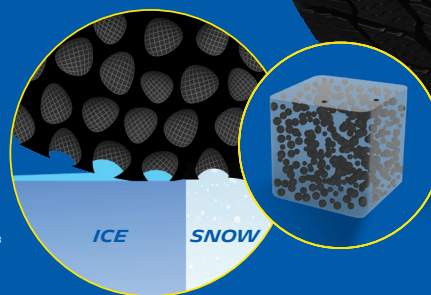


NOTCHED SIPES

VARIABLE THICKNESS SIPES

MICHELIN EVERGRIP™ TECHNOLOGIES

An innovative rigid polymer-based inclusion tread compound for improved grip on both snow and ice for the duration of the wear life^{1, 2, 3}



¹ New, at 10,000 km, and when worn to 4 mm and 2 mm tread depth, the MICHELIN® X-Ice® SNOW tire offers shorter snow and ice stopping distances on average than its predecessor, based on third-party snow braking test (between 35 km/h and 5 km/h) and ice braking test (between 30 km/h and 5 km/h), in December 2019 and January 2020: (1) on a Volkswagen® Golf 1.5 TSI comparing the MICHELIN® X-Ice® SNOW tire versus MICHELIN® X-Ice® Xi3 in tire size 205/55R16 94H XL, and (2) on a Volkswagen® Tiguan comparing the MICHELIN® X-Ice® SNOW SUV tire versus MICHELIN® Latitude® X-ICE® Xi2 in tire size 235/55R19 105H XL. ² Based on third-party ice braking test on a Volkswagen® Tiguan (between 30 km/h and 5 km/h), in December 2019 and January 2020, comparing: (1) the MICHELIN® X-Ice® SNOW SUV tire versus BRIDGESTONE® Blizzak DM-V2, CONTINENTAL® Viking Contact 7, NOKIAN® Hakkapeliitta R3 SUV, GOODYEAR® UltraGrip Ice WRT SUV and TOYO® Observe GS15 in tire size 235/55R19 105H XL and (2) on a Volkswagen® Golf 1.5 TSI comparing the MICHELIN® X-Ice® SNOW tire versus BRIDGESTONE® Blizzak WS-90 and Blizzak Ice, CONTINENTAL® Viking Contact 7, NOKIAN® Hakkapeliitta R3, GOODYEAR® UltraGrip Ice 2 and PIRELLI® Ice Zero FR in tire size 205/55R16 94H XL. All tires mechanically buffed, then 8,000 km performed in real usage in North Finland until worn to 4 mm tread depth before being tested. ³ Based on third-party ice braking test (between 30 km/h and 5 km/h) in December 2019 and January 2020, in a Volkswagen® Tiguan comparing the MICHELIN® X-Ice® SNOW SUV tire versus NOKIAN® Hakkapeliitta R3 SUV in tire size 235/55R19 105H XL. Tires mechanically buffed, then 8,000 km performed in real usage in North Finland, until worn to 4 mm tread depth before being tested. ⁴ Based on: (1) internal hydroplaning longitudinal acceleration test performed in France in March 2019, on a Volkswagen® Golf 7 comparing the MICHELIN® X-Ice® SNOW tire versus MICHELIN® X-ICE® Xi3 in tire size 205/55R16 94H XL and on: (2) internal hydroplaning curve test performed in Japan in February 2019, on an AUDI® A4, comparing the MICHELIN® X-Ice® SNOW tire versus MICHELIN® X-ICE® Xi3 in tire size 205/55R16 94H XL. ⁵ Based on third-party longevity tests, in North Finland between October 2019 and January 2020, on a Volkswagen® Golf 1.5 TSI comparing the MICHELIN® X-Ice® SNOW tire versus BRIDGESTONE® Blizzak WS-90, CONTINENTAL® Viking Contact 7, NOKIAN® Hakkapeliitta R3, GOODYEAR® UltraGrip Ice 2, Pirelli® Ice Zero FR in tire size 205/55R16 94H XL. 12,000 kilometres driven per winter is estimated from annual average kilometres driven in Canada per vehicle by Desrosiers Automotive Consultants. A winter season is defined as six months. ⁶ Based on ASTM F1046 standard guide for preparing artificially worn passenger and light truck tires for testing. The MICHELIN® X-Ice® SNOW and MICHELIN® X-Ice® SNOW SUV tires were buffed internally by Michelin, then 8,000 km performed in real usage in North Finland, by a third party, until worn to 4 mm tread depth and 3 mm tread depth. © 2020 Michelin North America (Canada) Inc. All rights reserved. The Michelin Man is a registered trademark owned by Michelin North America, Inc. (C17688-C - 02/20)

SAFETY TECHNOLOGIES DEPEND ON GRIP TO HELP PROTECT WHAT'S MOST IMPORTANT TO YOU

A VOLVO WINTER WHEEL KIT HELPS YOU GET THE MOST OUT OF THESE SAFETY FEATURES:



Rear Collision Mitigation
Electronic Stability Control
ABS
Lane Keeping Aid
Pilot Assist

Adaptive Cruise Control
Run-off Road Mitigation
Cross Traffic Alert with Auto Brake
Blind Spot Information with Steer Assist
Oncoming Mitigation by Braking

Oncoming Lane Mitigation
Pedestrian Detection
Cyclist Detection
Large Animal Detection
Other Vehicle Detection

Volvo products, technology and services cannot guarantee safety or the avoidance of collisions since road and weather conditions as well as driver alertness and competence play a part.